



icmr **RMRCBB**
INDIAN COUNCIL OF
MEDICAL RESEARCH
REGIONAL MEDICAL RESEARCH
CENTRE, BHUBANESWAR

Monday Morning

ICMR-Regional Medical Research Centre, Bhubaneswar Library & Information Division

(Laxmi Narayan Memorial Library)

Weekly Current Awareness Service

VOL 5#13

25th May

2020

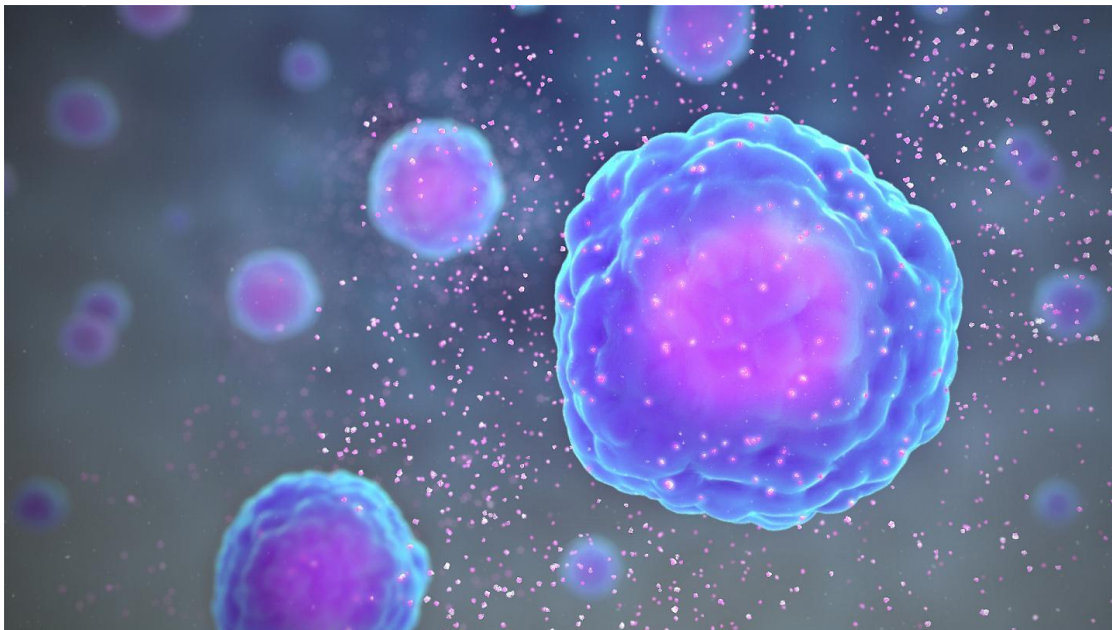
*"It is health that is real wealth and not pieces of gold and silver."
- Mahatma Gandhi*

About Monday Morning

Monday morning is a weekly E- CAS (Electronic Current Awareness Service) of RMRC Library, Bhubaneswar which carries one Biomedical & health science news item and some useful current medical research links so that the scientists can access the articles. This E- Bulletin starts its journey from 21st Nov. 2016. In this maiden attempt we cordially invite your inputs and suggestions to improve in future.

Dr. Banamber Sahoo, Lib & Inf. Officer
Adyasa Bhoi & Suryajit Samal (Lib. Trainee)

Preventing 'cytokine storm' may ease severe COVID-19 symptoms.



Preventing 'cytokine storm' may ease severe COVID-19 symptoms.

https://www.eurekalert.org/pub_releases/2020-05/hhmi-ps052120.php

1. **How the coronavirus pandemic slashed carbon emissions — in five graphs.**

Near-real-time data on carbon emissions reveal the sectors, countries and events that had the most impact, but it is unclear how long the dip will last. For more details, click on the below link.

<https://www.nature.com/articles/d41586-020-01497-0>

2. **Why do some COVID-19 patients infect many others, whereas most don't spread the virus at all?**

When 61 people met for a choir practice in a church in Mount Vernon, Washington, on 10 March, everything seemed normal. For 2.5 hours the chorists sang, snacked on cookies and oranges, and sang some more. But one of them had been suffering for 3 days from what felt like a cold—and turned out to be COVID-19. For more details, click on the below link.

<https://www.sciencemag.org/news/2020/05/why-do-some-covid-19-patients-infect-many-others-whereas-most-don-t-spread-virus-all#>

3. **Overcoming challenges of individuals with autism during the COVID-19 pandemic.**

The COVID-19 pandemic is stressful enough, but for children and adults with autism spectrum disorder (ASD) and their families, the crisis can be especially difficult. Adrien A. Eshraghi, M.D., M.Sc., professor of Otolaryngology, Neurological Surgery and Biomedical Engineering, has dedicated much of his career to caring for individuals with various disabilities including individuals with autism, who are very dear to him. For more details, click on the below link.

https://www.eurekalert.org/pub_releases/2020-05/uomm-oco052020.php

4. **Ten reasons why immunity passports are a bad idea.**

Imagine a world where your ability to get a job, housing or a loan depends on passing a blood test. You are confined to your home and locked out of society if you lack certain antibodies. For more details, click on the below link.

<https://www.nature.com/articles/d41586-020-01451-0>

5. **Diabetes and COVID-19 in-hospital mortality rates.**

A recent large-scale study concludes that both type 1 and type 2 diabetes are associated with an increased risk of COVID-19-related in-hospital death. It finds that one-third of coronavirus-related deaths in hospitals in England are individuals with diabetes. For more details, click on the below link.

<https://www.medicalnewstoday.com/articles/diabetes-and-covid-19-in-hospital-mortality-rates>

E- CAS (Current Awareness Service)



icmr **RMRCBB**
INDIAN COUNCIL OF
MEDICAL RESEARCH REGIONAL MEDICAL RESEARCH
CENTRE, BHUBANESWAR

Monday Morning team

Library & Information Division

ICMR-Regional Medical Research Centre

Bhubaneswar- 751023, ODISHA,

E- Mail: drbsahoo@gmail.com, Tel: 9438182087