



ICMR-Regional Medical Research Centre, Bhubaneswar Library & Information Division

(Laxmi Narayan Memorial Library)

Weekly Current Awareness Service

VOL 4#29

29th July

2019

"Intellectual growth should commence at birth and cease only at death."

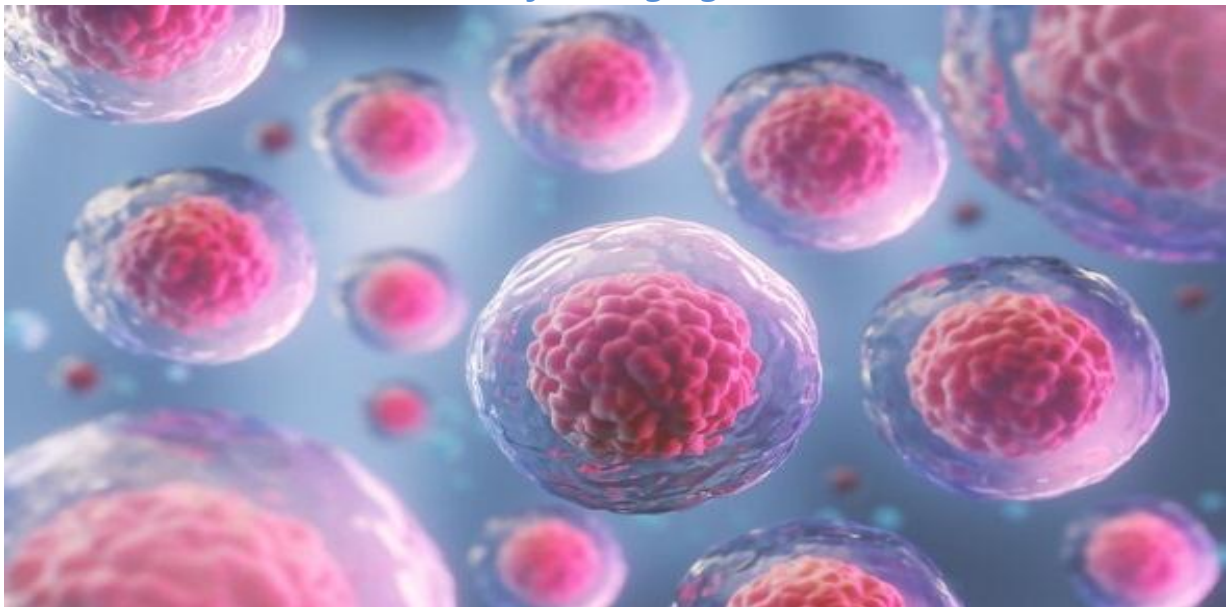
-Albert Einstein

About Monday Morning

Monday morning is a weekly E- CAS (Electronic Current Awareness Service) of RMRC Library, Bhubaneswar which carries one Biomedical & health science news item and some useful current medical research links so that the scientists can access the articles. This E- Bulletin starts its journey from 21st Nov. 2016. In this maiden attempt we cordially invite your inputs and suggestions to improve in future.

Dr. Banamber Sahoo, Lib & Inf. Officer
Sonali Sribastab (Lib. Trainee)

New cause of cell aging discovered



New research could be key to our understanding of how the aging process works.

<https://www.sciencedaily.com/releases/2019/07/190725151018.htm>

1. Kids with Autism at Increased Risk for Bullying, Even from Siblings.

Bullying is a problem that no parent wants to deal with, but it's one that can't be ignored. No one wants to be the parent of a bullied child or even worse be the parent of a bully. But too often the bully and the bullied are the same person. For more details, click on the below link

<https://www.healthline.com/health-news/children-with-autism-are-at-increased-risk-for-bullying-even-from-siblings>

2. Drug resistant UTI bacteria can hide in the gut.

Urinary tract infections (UTIs) arise when bacteria enter the urinary tract. It is one of the most common infections to affect people. Although any part of the urinary tract can become infected, UTIs most commonly occur in the bladder. For more details, click on the below link

<https://www.medicalnewstoday.com/articles/325863.php>

3. Foodborne Parasite Sickens 100 in Massachusetts. No Source Has Been Found.

The single-celled parasite, *Cyclospora cayentanensis*, is typically transmitted through contaminated food, but so far, health officials have not identified a food source responsible for the Massachusetts outbreak. For more details, click on the below link

<https://www.livescience.com/66016-cyclospora-outbreak-massachusetts.html>

4. Emergency medicine: Department-based intensive care unit improves patient survival rates

A new study found having an intensive care unit within the emergency department improved care and survival rates for the entire emergency department population. The time patients have to wait in the emergency department for inpatient critical care resources is increasing nationwide, and longer wait times for intensive care units have been associated with decreased survival rates. For more details, click on the below link

https://www.eurekalert.org/pub_releases/2019-07/mm-u-emd072519.php

5. Visual Guide to Cirrhosis

Cirrhosis damages your liver. It causes scarring that slowly replaces healthy tissue. Eventually, this blocks blood flow and makes it harder for your liver to do its job. It won't be able to filter toxins and help break down nutrients and medications. And the organ won't make proteins and other substances fast enough to meet your body's needs. Over the long term, it can shut down your liver. For more details, click on the below link

<https://www.webmd.com/hepatitis/ss/slideshow-visual-guide-cirrhosis>

E- CAS (Current Awareness Service)



icmr **RMRCBB**
INDIAN COUNCIL OF MEDICAL RESEARCH REGIONAL MEDICAL RESEARCH CENTRE, BHUBANESWAR

Monday Morning team

Library & Information Division

ICMR-Regional Medical Research Centre

Bhubaneswar- 751023, ODISHA,

E- Mail: drbsahoo@gmail.com, Tel: 9438182087