

Monday Morning

RMRC, Bhubaneswar

(Laxmi Narayan Memorial Library)

Weekly Current Awareness Service

VOL 3#37

24th September

2018

“A Library is the delivery room for the birth of ideas, a place where History comes to Life.”

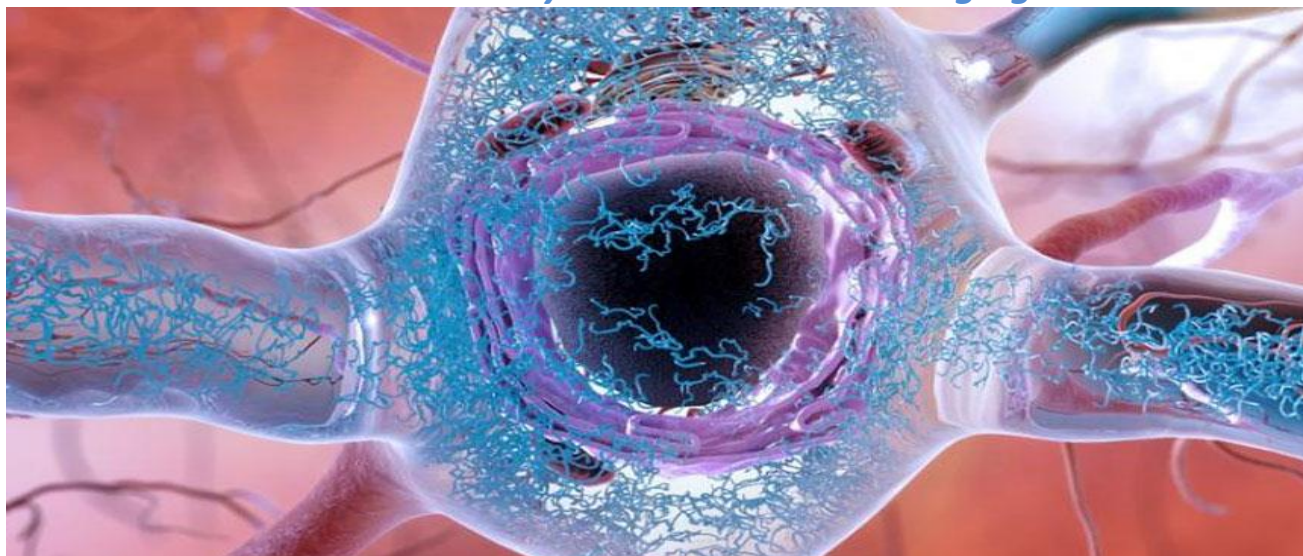
- *Norman Cousins*

About Monday Morning

Monday morning is a weekly E- CAS (Electronic Current Awareness Service) of RMRC Library, Bhubaneswar which carries one Biomedical & health science news item and some useful current medical research links so that the scientists can access the articles. This E- Bulletin starts its journey from 21st Nov. 2016. In this maiden attempt we cordially invite your inputs and suggestions to improve in future.

Dr. Banamber Sahoo, Lib & Inf. Officer
Sonali Sribastab & Shaktidhar Barik (Lib. Trainee)

Over the hill cells may cause trouble in the aging brain



TANGLED UP Senescent brain cells that no longer do their jobs properly may have a hand in creating tangles of tau (illustrated in blue inside a nerve cell) and, ultimately, dementia, a mouse study suggests.

<https://www.sciencenews.org/article/over-hill-cells-may-cause-trouble-aging-brain>

1. Viral RNA sensing

Even tiny amounts of viruses can have disastrous consequences. RNA identification can reveal here type of virus present. A fast and sensitive technique based on optical detection has now been outlined in the journal Angewandte Chemie. Chirality switches triggered by binding can be measured by circular dichroism spectroscopy. For more details click on the below link

https://www.eurekalert.org/pub_releases/2018-09/w-vrs091918.php

2. Cancer Spreads from Organ Donor to 4 People in 'Extraordinary' Case

It's well known that organ transplants can pass infectious diseases from donors to recipients in rare cases. But even more rarely, transplants can transmit cancer, as a new case shows. For more details click on the below link

<https://www.livescience.com/63596-organ-donation-transmitted-breast-cancer.html>

3. Structure of the membrane-assembled retromer coat determined by cryo-electron tomography

Eukaryotic cells traffic proteins and lipids between different compartments using protein-coated vesicles and tubules.. For more details click on the below link

<https://www.nature.com/articles/s41586-018-0526-z>

4. Apparently, the eye changes both the software and the hardware of its light-sensing cells to create a night vision for itself.

Turns out our eyes are more amazing than we would ever know. Not only do they produce imagery and colour accurately they also have an inbuilt natural version that can help offer night vision. For more details click on the below link

<https://www.indiatimes.com/health/buzz/did-you-know-that-your-eyes-have-a-natural-version-of-night-vision-353191.html>

5. Diabetes Management: Why Should You Eat More Sweet Potatoes to Manage Blood Sugar

According to the book, 'Healing Foods' sweet potatoes are very effective in ensuring that your blood sugar levels do not fluctuate. For more details click on the below link

<https://food.ndtv.com/food-drinks/diabetes-management-why-should-you-eat-more-sweet-potatoes-to-manage-blood-sugar-1917288>

E- CAS (Current Awareness Service)



Monday Morning team
Library & Information Division
ICMR-Regional Medical Research Centre
Bhubaneswar- 751023, ODISHA,
E- Mail: drbsahoo@gmail.com, Tel: 9438182087