

**Monday Morning**

# **RMRC, Bhubaneswar**

## **(Laxmi Narayan Memorial Library)**

### **Weekly Current Awareness Service**

VOL 3#24

18<sup>th</sup> June

2018

*“Knowledge isn’t power until it is applied”*

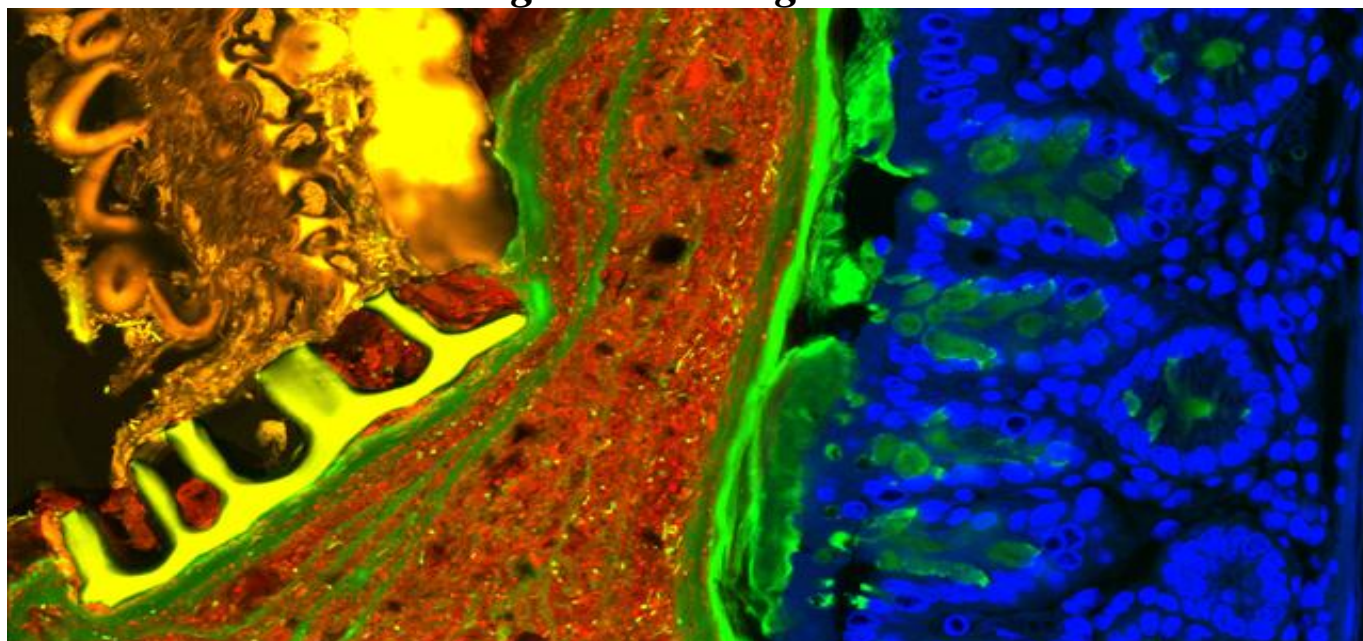
*– Dale Carnegie*

#### **About Monday Morning**

Monday morning is a weekly E- CAS (Electronic Current Awareness Service) of RMRC Library, Bhubaneswar which carries one Biomedical & health science news item and some useful current medical research links so that the scientists can access the articles. This E- Bulletin starts its journey from 21<sup>st</sup> Nov. 2016. In this maiden attempt we cordially invite your inputs and suggestions to improve in future.

**Dr. Banamber Sahoo, Lib & Inf. Officer**  
Poonam Singh Deo & Hemanti Mahali (Lib. Trainee)

#### ***Laxative Causes Long-Term Changes to Mouse Microbiome***



**A section of the mouse gut imaged with confocal microscopy**

<https://www.the-scientist.com/?articles.view/articleNo/54851/title/Laxative-Causes-Long-Term-Changes-to-Mouse-Microbiome/>

## 1. Yellow fever: A new method for testing vaccine safety

Scientists from the Institut Pasteur, the CNRS and Sanofi Pasteur have recently developed a novel alternative method to animal testing that can be used to verify the safety of vaccines such as the yellow fever vaccine. This original approach is based on the development of an in cellulo device using a 3D culture model, the "BBB-Minibrain", to evaluate the safety of live vaccines for human use..For more details click on the below link.

[https://www.eurekalert.org/pub\\_releases/2018-06/ip-yfa061418.php](https://www.eurekalert.org/pub_releases/2018-06/ip-yfa061418.php)

## 2. Chemists in Odisha begin process to keep generic medicines in separate shelf as per DCGI directive

Utkal Chemists & Druggists Association (UCDA), the state branch of the All Indian Organization of Chemists & Druggists (AIOCD) in Odisha, has informed that their members have started the process of segregating generic versions of the pharmaceutical products into a separate area in the medical shops on special racks in compliance with the directions of the central and state drug regulators.. For more details click on the below link

<http://www.pharmabiz.com/NewsDetails.aspx?aid=109476&sid=1>

## 3. CRE Infection: Causes, Symptoms & Treatment

CRE, which stands for carbapenem-resistant enterobacteriaceae, are strains of bacteria that are resistant to carbapenem, a class of antibiotics typically used as a last resort for treating severe infections when other antibiotics have failed. These organisms have been described as "nightmare bacteria" because they have become resistant to nearly all available antibiotics, making CRE infections extremely difficult to treat and potentially deadly.For more details click on the below link

<https://www.livescience.com/50041-cre-symptoms-treatment.html>

## 4. 5 Fruits You Should Include In Your Cholesterol Diet

Did you know heart ailments were the top killers globally in the year 2016? When it comes to heart, it is critical that you take advices from trusted sources. One of the most common conditions faced by people of today's generation is that of their high 'cholesterol' levels, which is taking a toll on their heart health. What was earlier seen as a problem associated with old age, is slowly findings its way amongst young adults too.click on the below link

<https://food.ndtv.com/health/5-fruits-you-should-include-in-your-cholesterol-diet-1867581>



## E- CAS (Current Awareness Service)

Monday Morning team

Library & Information Division

ICMR-Regional Medical Research Centre

Bhubaneswar- 751023, ODISHA ,

E- Mail: drbsahoo@gmail.com, Tel: 9438182087