

**Monday Morning**

# **RMRC, Bhubaneswar**

## **(Laxmi Narayan Memorial Library)**

### **Weekly Current Awareness Service**

VOL 3#20

14<sup>th</sup> May

2018

*“Your mind will answer most questions if you learn to relax and wait for the answer”*

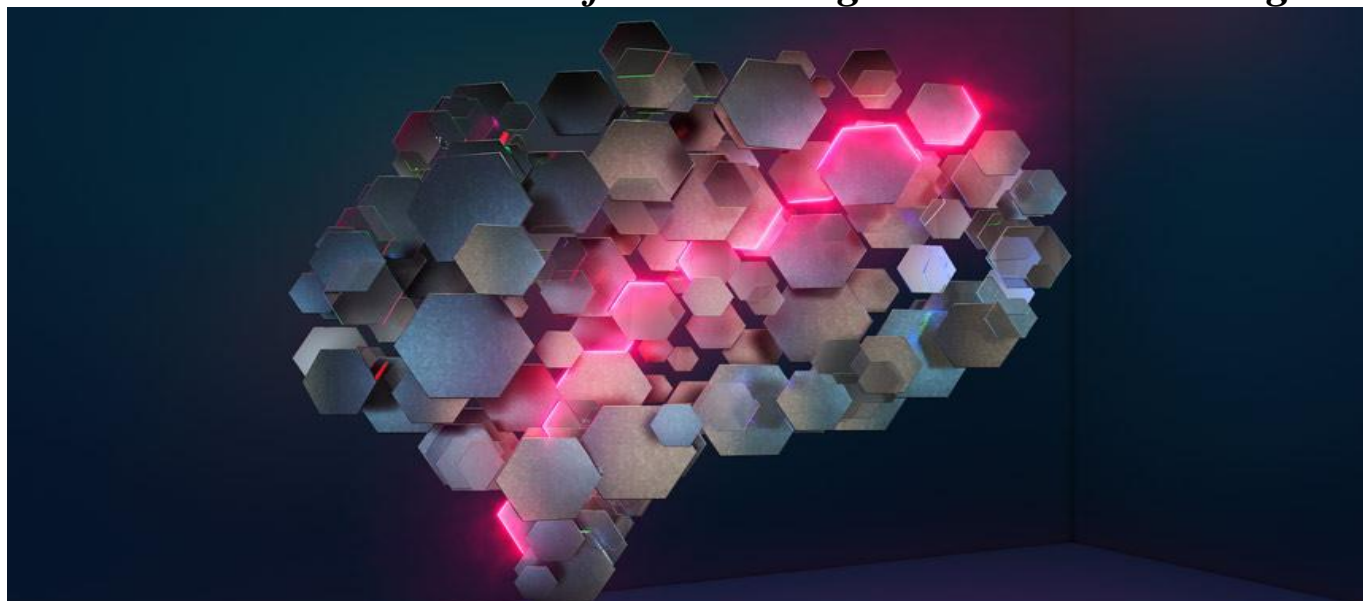
— William S. Burroughs

#### **About Monday Morning**

Monday morning is a weekly E- CAS (Electronic Current Awareness Service) of RMRC Library, Bhubaneswar which carries one Biomedical & health science news item and some useful current medical research links so that the scientists can access the articles. This E- Bulletin starts its journey from 21<sup>st</sup> Nov. 2016. In this maiden attempt we cordially invite your inputs and suggestions to improve in future.

**Dr. Banamber Sahoo, Lib & Inf. Officer**  
Poonam Singh Deo & Hemanti Mahali (Lib. Trainee)

*This AI uses the same kind of brain wiring as mammals to navigate*



**NAVIGATION KNOW-HOW** An AI that mentally maps its environment, much like mammals do, could help solve a mystery about the navigational nerve cells in our brains

<https://www.sciencenews.org/article/AI-uses-mammal-brain-wiring-navigate?tgt=nr>

## 1. ICMR issues new guidelines for type 2 diabetes management as patient numbers touch 72.9 million

The guidelines assume significance as the country has the second largest number of people with diabetes in the world. The International Diabetes Federation estimates that there are 72.9 million people with diabetes in India now, which is projected to rise to 134.3 million by 2045. The prevalence of diabetes in urban India, especially in large metropolitan cities, has increased from 2 per cent in the 1970s to over 20 per cent at present and the rural areas are also fast catching up.

For more details click on the below link

<http://www.pharmabiz.com/NewsDetails.aspx?aid=108719&sid=1>

## 2. New Ebola outbreak declared in Democratic Republic of the Congo

The Government of the Democratic Republic of the Congo declared a new outbreak of Ebola virus disease (EVD) in Bikoro in Equateur Province today (8 May). The outbreak declaration occurred after laboratory results confirmed two cases of EVD. The Ministry of Health of Democratic of the Congo (DRC) informed WHO that two out of five samples collected from five patients tested positive for EVD at the Institut National de Recherche Biomédicale (INRB) in Kinshasa. More specimens are being collected for testing. For more details click on the below link

<http://www.who.int/news-room/detail/08-05-2018-new-ebola-outbreak-declared-in-democratic-republic-of-the-congo>

## 3. The secret of a long life

Usually the rule in the animal kingdom is: a lot of progeny means a short life - if you are less fertile, you live longer. However, it seems that social insects - that is, insects that live in societies - can escape this fate. How they do this has been revealed by a research team from the Institute of Zoology at the University of Freiburg, taking the termite species *Macrotermes bellicosus* as its model. For more details click on the below link

[https://www.eurekalert.org/pub\\_releases/2018-05/uof-tso050818.php](https://www.eurekalert.org/pub_releases/2018-05/uof-tso050818.php)

## 4. I'd whisper to my student self: you are not alone

A black dog. That's how Winston Churchill described depression. A dark companion that lies quiet in the good times and is your master in the bad. Its arrival is hard to predict, just as its departure seems impossible until it has happened. Depression is as varied as the people who experience it, as shifting in form as a murmuration. Yet its flavour is unmistakable. For more details click on the below link

<https://www.nature.com/articles/d41586-018-05080-6>



## E- CAS (Current Awareness Service)

Monday Morning team

Library & Information Division

ICMR-Regional Medical Research Centre

Bhubaneswar- 751023, ODISHA ,

E- Mail: drbsahoo@gmail.com, Tel: 9438182087