

# RMRC, Bhubaneswar

(Laxmi Narayan Memorial Library)  
Weekly Current Awareness Service

Vol.2 # 13

27<sup>th</sup> March

2017

WHAT IS MORE IMPORTANT IN A LIBRARY THAN ANYTHING ELSE- THAN EVERYTHING ELSE- IS THE FACT THAT IT EXISTS.

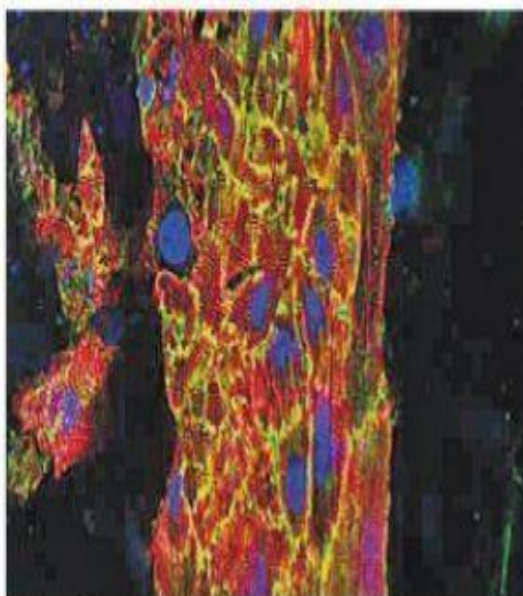
-ARCHIBAL MACLEISH

## About Monday Morning

Monday morning is a weekly E- CAS (Electronic Current Awareness Service) of RMRC Library, Bhubaneswar which carries one Biomedical & health science news item and some useful current medical research links so that the scientists can access the articles. This E- Bulletin starts its journey from 21<sup>st</sup> Nov. 2016. In this maiden attempt we cordially invite your inputs and suggestions to improve in future.

Dr. Banamber Sahoo, Lib & Inf. Officer  
Satyajit Nayak & Twinkle Rout (Lib. Trainee)

## 'Beating' heart muscle to help cardiac studies



### T-ISSUE SOLVED

MELBOURNE: Scientists have created a functional 'beating' human heart muscle from stem cells, a significant step forward in cardiac disease research.

Researchers at The University of Queensland (UQ) in Australia developed models of human heart tissue in the laboratory so they can study cardiac biology and diseases 'in a dish'.

"The patented technology enables us to now perform experi-

ments on human heart tissue in the lab," said James Hudson from the UQ School of Biomedical Sciences. "This provides scientists with viable, functioning human heart muscle to work on, to model disease and screen new drugs," said Hudson. "In the laboratory we used dry ice to kill part of the tissue while leaving the surrounding muscle healthy and viable."

Each year, about 54,000 Australians suffer a heart attack, with an average of about 23 deaths every day.

## 1. **Dramatic evolution within human genome may have been caused by malaria parasite.**

A genetic mutation that protects people from a common form of malaria spread like wildfire in sub-Saharan Africa about 42,000 years ago, according to a new study. Today, it's nearly impossible to find somebody from this region who doesn't have it. That makes the mutation one of the swiftest, strongest changes to the human genome yet seen—though it remains a mystery why this particular disease sparked such a dramatic evolutionary response. For more details click on the below link.

<http://www.sciencemag.org/news/2017/03/dramatic-evolution-within-human-genome-may-have-been-caused-malaria-parasite>

## 2. **DNA typos to blame for most cancer mutations.**

Nearly two-thirds of the mutations that drive cancers are caused by errors that occur when cells copy DNA, mathematical models suggest. For more details click on the below link.

<http://www.nature.com/news/dna-typos-to-blame-for-most-cancer-mutations-1.21696>

## 3. **Scientists assemble Zika virus mosquito genome from scratch.**

A team spanning Baylor College of Medicine, Rice University, Texas Children's Hospital and the Broad Institute of MIT and Harvard has developed a new way to sequence genomes, which can assemble the genome of an organism, entirely from scratch, dramatically cheaper and faster. While there is much excitement about the so-called "\$1000 genome" in medicine, when a doctor orders the DNA sequence of a patient, the test merely compares fragments of DNA from the patient to a reference genome. For more details click on the below link.

[https://www.eurekalert.org/pub\\_releases/2017-03/bcom-saz032317.php](https://www.eurekalert.org/pub_releases/2017-03/bcom-saz032317.php)

## 4. **Amid advances in gene therapy, 'bubble baby' in SF gains hope.**

Ja'Ceon Golden has only ever known the inside of hospitals. But the treatment he's receiving may have implications far beyond his as-yet isolated life. For more details click on the below link.

<http://www.sfchronicle.com/health/article/Amid-advances-in-gene-therapy-bubble-baby-10991046.php#photo-1251658>

## 5. **Alcohol abuse linked to higher heart risks, study says.**

"One of the most surprising findings... is that people who abused alcohol are at increased risk for heart attack or myocardial infarction," said Dr. Gregory M. Marcus, director of clinical research in the Division of Cardiology at the University of California, San Francisco and senior author of the study. Past data suggests that moderate drinking may be protective, he said, helping ward off this disease. For more details click on the below link.

<http://edition.cnn.com/2017/01/02/health/alcohol-abuse-heart-disease-risk/>



## **E- CAS (Current Awareness Service)**

**Monday Morning team**

**Library & Information Division**

**Regional Medical Research Centre (ICMR)**

**Bhubaneswar- 751023, ODISHA**

**E- Mail: drbsahoo@gmail.com, Tel: 9438182087**